

Figure 1: NPV View in S3analyse showing the contributions to NPV over time for a polymer flood simulation case

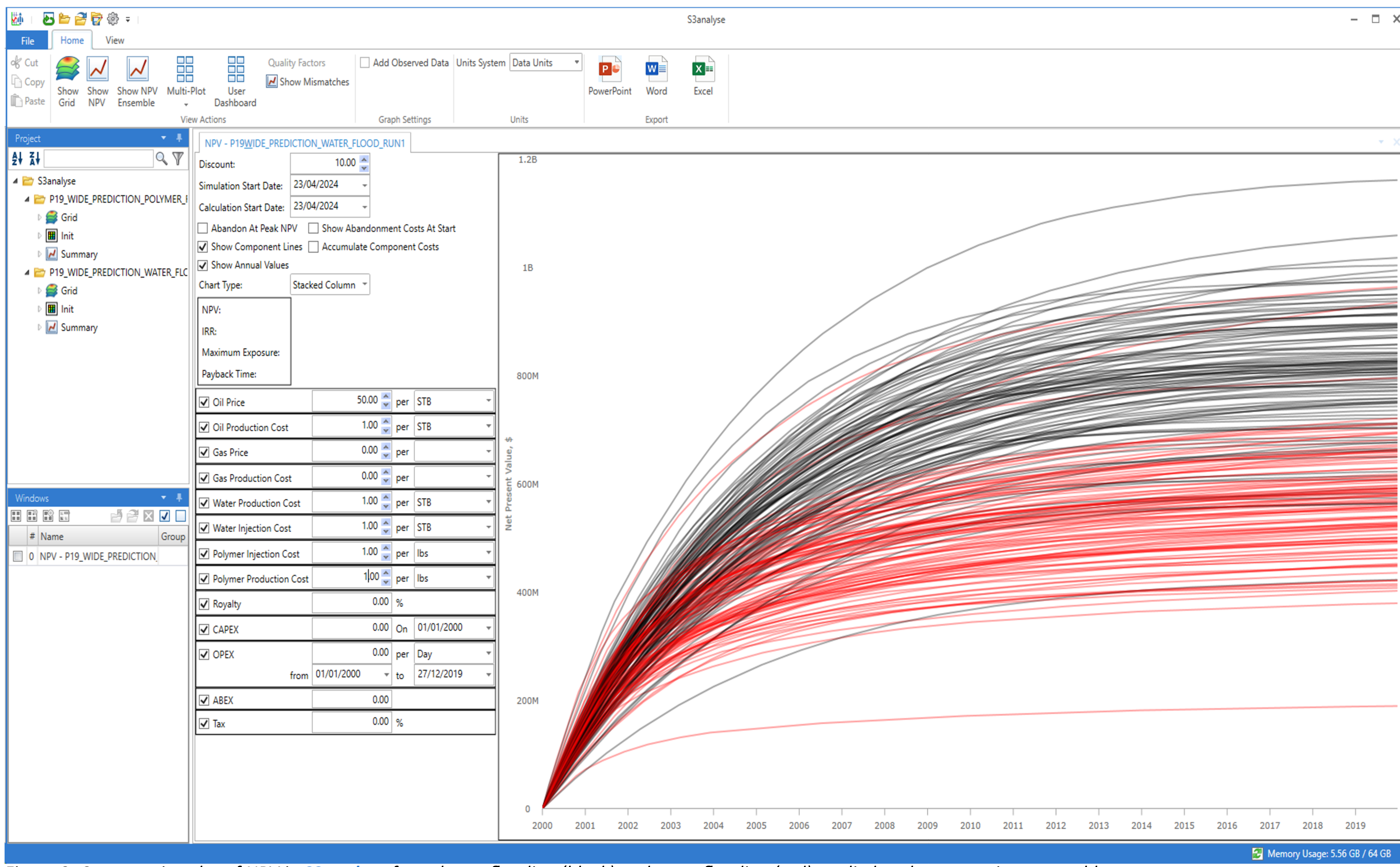


Figure 2: Comparative plot of NPV in S3analyse for polymer flooding (black) and waterflooding (red) applied to the uncertainty ensemble cases

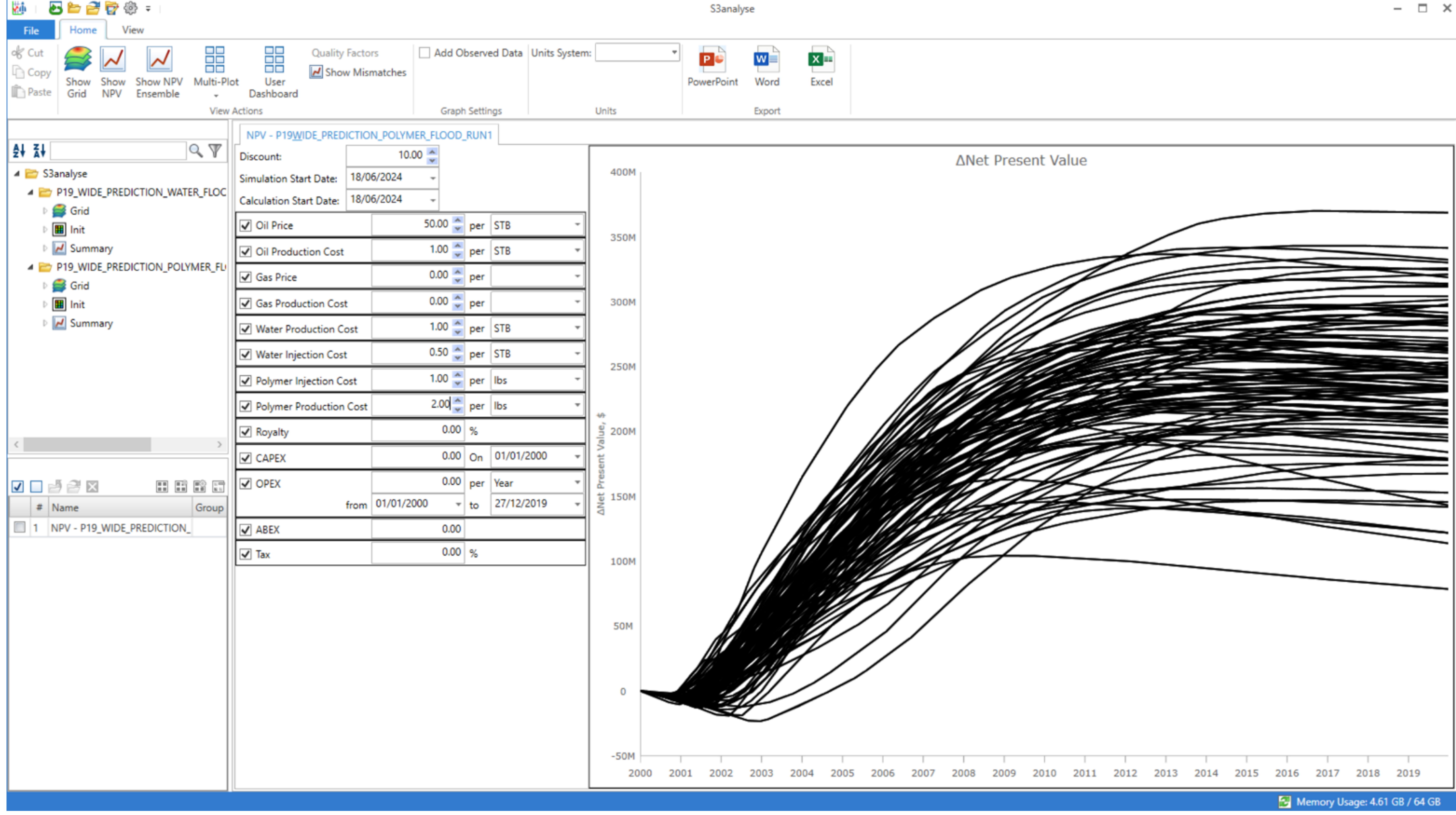


Figure 3: NPV-difference ensemble plot showing the increase in NPV for polymer flooding relative to waterflooding for each ensemble case

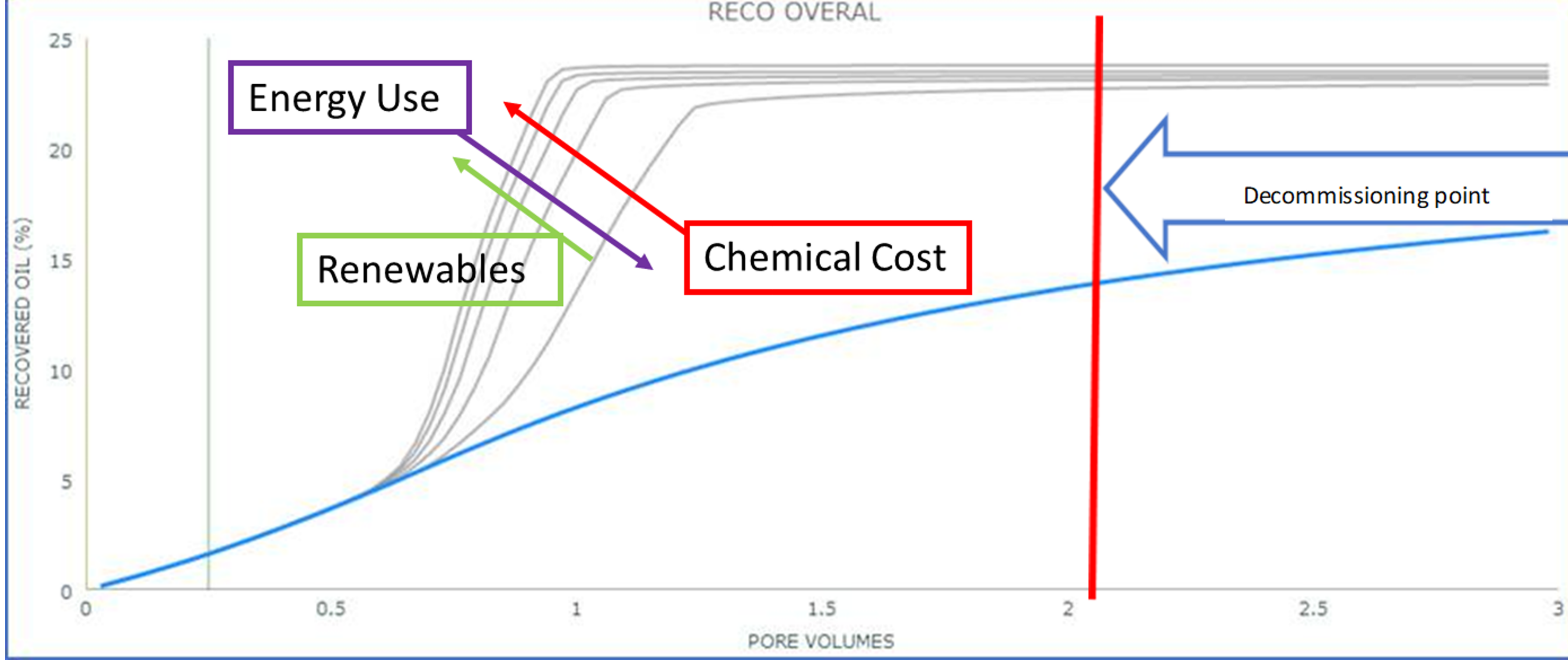


Figure 4: Polymer flooding can significantly decrease energy use