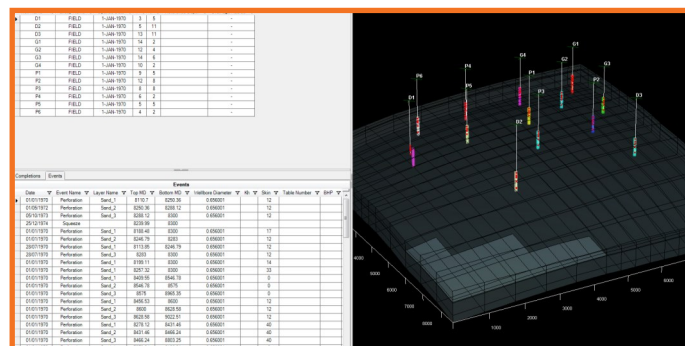
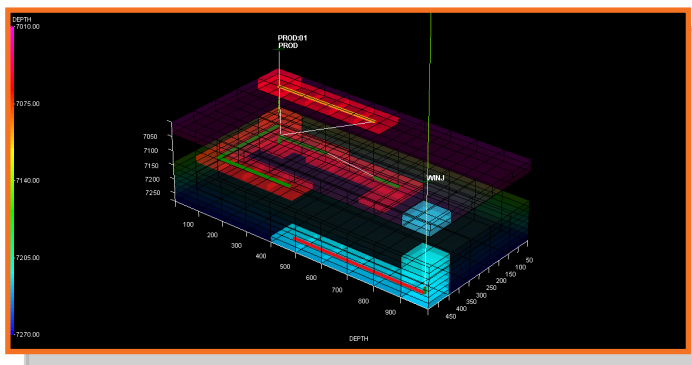
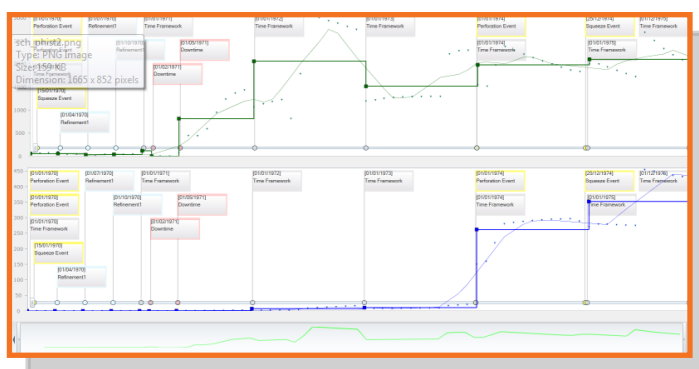




## Complete well management



- Quick and easy schedule creation
- Wide range of input data formats supported
- Multi-lateral well segment designer
- Clear and easy-to-use visualisation tools

## Complete well management



**S3schedule** is a state-of-the-art tool which enables engineers to automate and speed up key parts of their workflows. Create schedule sections for models automatically from various input data files, such as well trajectory data. It also works with production history data to give engineers the ability to use intuitive graphical methods to match simulation profiles to real production data.

### Benefits

- Quick and easy creation of schedule data
- Wide range of input data formats supported
- Clear and easy-to-use visualisation tools
- Multi-lateral well segment designer
- Simple and responsive visualisation of complex schedule data for large numbers of wells/completions
- Integration with assisted/automated history matching workflows via a command line interface
- Ease of migration of existing workflows

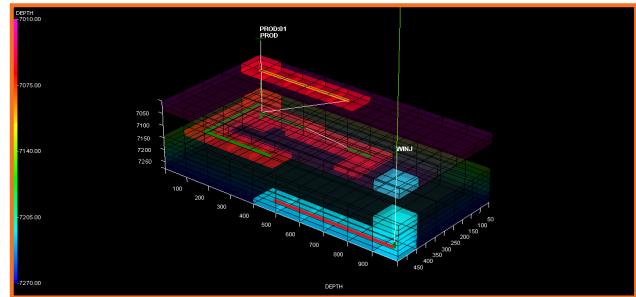
### Key Features

#### Wellbore Visualisation

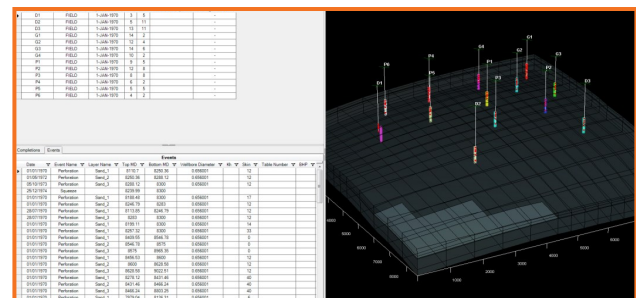
- Deviated Path
- Trajectory Cells
- Well events (along the well path, through time)

#### Well Building

- Calculate well trajectories based on well deviation and grid geometry
- Automatic calculation of connection factors
- Export well definitions including completion connection factors
- Designer for multi-segment models for multi-lateral wells
  - Multi-segment wells shown on 3D grid display
  - Automated segment calculation
  - Logging of segment creation rules for user verification
- ICDs



Wellbore View showing trajectory and event information



Wells Concept View

### Schedule Generation

- Simple time framework creation from production history data
- Interactive production history analysis tool
- Easy-to-use time framework refinement
- Automatic detection of significant well control changes using Change Point Analysis



Production history analysis tool

### Command Line Support (user scripting)

**S3schedule** can be called from scripts within assisted/automated history match workflows to update the connection factors in response to changes in grid property data e.g. permeability and grid geometry.



Sciencesoft Ltd  
Moorpark House  
11 Orton Place  
Glasgow  
G51 2HF

tel. +44 (0)141 445 0330  
fax. +44 (0)141 445 2041  
e-mail. sales@sciencesoft.com  
website. www.sciencesoft.com

© 2016 Sciencesoft Ltd. All rights reserved. All trademarks are recognised.